





## About Foresite Training

Foresite Training is a nationally registered training organisation, delivering qualifications and accredited courses in Melbourne and across the nation. We are able to train and assess competency at our training centres in Victoria or at your workplace anywhere in Australia.

## Short courses

We deliver nationally accredited short courses, industry specific modules as well as tailored programs for employers.

The information provided here covers a range of our popular short courses, however, we also deliver a variety of other courses we'd be happy to discuss with you.

Entry requirements apply to some courses. Course prices and durations are subject to change and will be confirmed prior to enrolment. Additional fees may apply for regional and interstate training.

## Ask us about our qualifications\*

Foresite Training delivers a range of nationally accredited qualifications with regular intakes throughout the year.

Talk to us about how we can help upskill you or your employees.

## Industry training

- Heavy vehicle licensing
- Warehousing
- High risk work licences
- Earthmoving
- Traffic management
- Logistics
- Driving operations
- Surface extraction
- Construction

## Workplace delivery

We can deliver training at your workplace helping you maximise your productivity. Discuss all options available with us today.

Entry requirements apply to courses. Course prices and durations are subject to change and will be confirmed prior to enrolment.

\*This training may be delivered with Victorian and Commonwealth Government funding through the Skills First Program for eligible individuals. Commencing this course may impact your future entitlement to receive government subsidised training. Individuals with disabilities and/or special needs are encouraged to apply. Fees apply.



**Skills. Jobs.  
Safe Workplaces.**

**Call 1300 366 015**

or email [enquiries@foresitetraining.com.au](mailto:enquiries@foresitetraining.com.au)

Individuals with disabilities and/or special needs are encouraged to apply.

**FORESITE TRAINING PTY LTD**  
RTO Code: 22227 ABN: 30 119 110 762



**Government  
funding may  
be available  
for selected  
courses\***

# Heavy Vehicle Licensing

## LIGHT RIGID VEHICLE LICENCE (LR)

This licensing course is for a light rigid vehicle of greater than 4.5 tonnes but no greater than 8 tonnes GVM or which seats more than 12 people (including driver). You are eligible for a light rigid licence after holding a car licence for 1 year.

Our Locations: ✓

PRICE: \$1,099.00



## MEDIUM RIGID VEHICLE LICENCE (MR)

This licensing course is for any 2 axle rigid vehicle greater than 8 tonnes GVM. You are eligible for a medium rigid licence after holding a car licence for 1 year.

Our Locations: ✓

PRICE: \$1,099.00



## HEAVY RIGID VEHICLE LICENCE (HR)

This licensing course is for a vehicle 8 tonnes GVM and above, with 3 or more axles. You are eligible for a heavy rigid licence after holding a car licence for 2 years.

Our Locations: ✓

PRICE: \$1,199.00



## HEAVY RIGID NON-SYNCHRO VEHICLE LICENCE (HR-NS)

This licensing course is for a vehicle 8 tonnes GVM and above, with 3 or more axles. You are eligible for a heavy rigid licence after holding a car licence for 2 years.

**HEAVY RIGID NON-SYNCHRO VEHICLE (HR-NS) EXPRESS\***  
**HEAVY RIGID NON-SYNCHRO VEHICLE (HR-NS) STANDARD**

PRICE: \$1,499.00  
PRICE: \$1,999.00

\*Express: Recommended only for persons with a minimum of 15 hours of drive experience in a non-sync vehicle.

Our Locations: ✓



## HEAVY COMBINATION VEHICLE LICENCE (HC)

This licensing course is for a vehicle 9 tonnes GVM and above. You are eligible for a heavy combination vehicle licence after holding a car licence for 2 years with at least 1 year of holding either a medium rigid or heavy rigid vehicle licence.

**HEAVY COMBINATION VEHICLE (HC-S)**  
**HEAVY COMBINATION VEHICLE (HC-NS) EXPRESS\***  
**HEAVY COMBINATION VEHICLE (HC-NS) STANDARD**

PRICE: \$1,499.00  
PRICE: \$1,499.00  
PRICE: \$1,999.00

\*Express: Recommended only for persons with a minimum of 15 hours of drive experience in a non-sync vehicle.

Our Locations: ✓



## MULTI COMBINATION VEHICLE LICENCE (MC)

This licensing course is for a licence to drive a multi combination vehicle. You must hold a current (Valid) HC licence.

Our Locations: ✓

PRICE: \$1,499.00



**You can upgrade your truck licence in Hallam or Laverton North. Book today!**



# Load Restraint

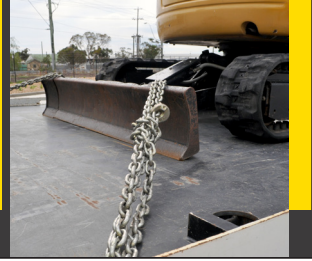
## LOAD RESTRAINT - NON ACCREDITED

### LOAD RESTRAINT

The load restraint program can be somewhat customised to your business needs, focusing on correct placement, load distribution and securing onto a range of vehicles. The program includes a presentation followed by practical training with the equipment commonly used by your organisation.

Our Locations: ✓ Your workplace ✓

**DURATION: 4 HOURS | PRICE: \$ASK**



## LOAD & UNLOAD PLANT

### RIIHAN308F - LOAD AND UNLOAD PLANT

This load and unload plant course gives candidates the necessary skills and knowledge to safely and efficiently load and unload plant on floats and/or trailers.

Our Locations: ✓ Your workplace ✓

**DURATION: 2 DAYS | PRICE: \$ASK**



## LOAD & SECURE CARGO

### TLID0015 - LOAD AND UNLOAD GOODS/CARGO & TLIA1001 - SECURE CARGO

Learn to load and unload goods and cargo in accordance with relevant state/territory roads and traffic authority regulations/permit requirements. This course includes loading and unloading goods and cargo, securing and protecting a load and completing all required documentation.

Our Locations: ✓ Your workplace ✓

**DURATION: 2 DAYS | PRICE: \$ASK**



## CHAIN OF RESPONSIBILITY - NON ACCREDITED

### CHAIN OF RESPONSIBILITY

This course is a non-accredited workshop that covers the philosophy of COR. The course teaches that everyone in the supply chain, not just the driver, shares responsibility for ensuring breaches of the road laws do not occur and that all persons in the supply chain may be made liable.

Our Locations: ✓ Your workplace ✓

**DURATION: 4 HOURS | PRICE: \$ASK**



# Driving Behavior

## DEFENSIVE DRIVING - NON ACCREDITED

### DEFENSIVE DRIVING HEAVY VEHICLE

This course is designed to increase the level of driver safety, professionalism and awareness while encouraging a positive driving attitude. This course covers a range of defensive driving techniques and knowledge of increasing the efficient performance of the vehicle.

Our Locations: ✓ Your workplace ✓

**DURATION: ASK | PRICE: \$ASK**



## SAFE TOWING - CARAVAN, BOAT OR TRAILER - NON ACCREDITED

### SAFE TOWING TRAINING - CARAVAN, BOAT OR TRAILER

If you need to brush up on your reversing techniques or better understand safe towing with a caravan, boat or trailer, this course is constructed for all levels of experience to improve your skills in effective towing of a trailing vehicle for business or pleasure purposes.

Our Locations: ✓ Your workplace ✓

**DURATION: 4 HOURS | PRICE: \$ASK**





# Warehousing & Logistics

## FORKLIFT TRUCK (LF)

### TLILIC0003 - LICENCE TO OPERATE A FORKLIFT TRUCK

This high risk work (HRW) licensing course teaches the skills and knowledge required to operate a forklift truck safely. A forklift truck is a powered industrial truck equipped with lifting media made up of a mast and an elevating load carriage, to which is attached a pair of fork arms.

Our Locations: ✓ Your workplace ✓

**DURATION: 2 DAYS | PRICE: \$549.00**



## ORDER PICKING FORKLIFT TRUCK (LO)

### TLILIC0004 - LICENCE TO OPERATE AN ORDER PICKING FORKLIFT TRUCK

This high risk work (HRW) licensing course teaches the skills and knowledge required to operate an order picking forklift truck safely. An order picking forklift truck is a forklift truck where the operator controls are incorporated with the lifting media and elevate with the lifting media.

Our Locations: ✓ Your workplace ✓

**DURATION: 2 DAYS | PRICE: \$549.00**



## HIGH REACH TRUCK - NON ACCREDITED

### REACH TRUCK COURSES - HIGH REACH TRUCK

This course covers the skills and knowledge required to operate a high reach forklift truck. We teach you how to handle and manipulate the sensitive controls of a high reach forklift, which is designed to safely and efficiently lift and retrieve loads from extreme heights that traditional counterbalance forklifts or order pickers are unable to access.

Our Locations: ✓ Your workplace ✓

**DURATION: 4 HOURS | PRICE: \$275.00 (INC GST)**



## PALLET TRUCK - NON ACCREDITED

### PALLET TRUCK COURSE

This course covers a number of safety precautions needed to operate a pallet truck. Pallet trucks are used to make easy work out of what would usually be a multiple person job lifting a load from point A to point B, eliminating strain and energy whilst working more efficiently.

Our Locations: ✓ Your workplace ✓

**DURATION: 1 DAY | PRICE: \$ASK**



# Refresher Training & VOC

## REFRESHER TRAINING PROGRAMS

Our refresher training programs can be customised to your business needs at our locations or yours. Refresher courses often comprise of a theory presentation, videos, a written quiz then practical operation of the selected machine.



Our Locations: ✓ Your workplace: ✓

**PRICE: \$ASK**

## VERIFICATION OF COMPETENCY (VOC)

VOC is defined as “a method of documented evaluation of the skill level of a person against defined competency standards.” VOC's are available on a range of plant and equipment and can be customised to your business needs and requirements.



Our Locations: ✓ Your workplace: ✓

**PRICE: \$ASK**



# Work Platform

## EWP - (BOOM LENGTH 11 METRES OR MORE)

### TLILIC0005 - LICENCE TO OPERATE A BOOM-TYPE ELEVATING WORK PLATFORM (BOOM LENGTH 11 METRES OR MORE)

This high risk work (HRW) licence is a requirement for operators of elevating work platforms exceeding 11 metres. This course teaches the skills and knowledge required to operate an elevating work platform.

Our Locations: ✓ Your workplace: ✓

DURATION: 2 DAYS | PRICE: \$599.00



## VERTICAL LIFT OR SCISSOR LIFT (UNDER 11 METERS)

### EWPA YELLOW CARD - UNDER 11 METRES

This course is designed to give participants the knowledge and skills to operate elevating work platforms which are not classified as requiring a high risk work (HRW) licence. Two Yellow Card categories that are available are Vertical Lift (VL) and Scissor Lift (SL).

Our Locations: ✓ Your workplace: ✓

DURATION: 1 DAY | PRICE: \$350.00



# Working At Heights

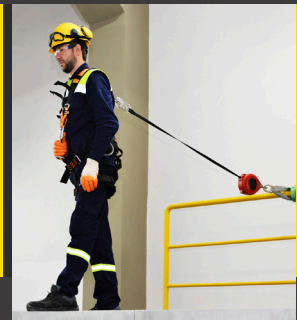
## WORKING AT HEIGHTS

### RIIWH5204E – WORK SAFELY AT HEIGHTS

This course is designed to give participants the skills and knowledge required to work safely at heights in the Resources and Infrastructure Industries. Working at heights training is focused on fall prevention rather than fall arrest. It is designed to equip workers with the knowledge and skills to safely work in any height situation, primarily being aimed at general construction, maintenance, mining, large factories or other work situations where work is conducted in a place where a fall from one level to another is possible.

Our Locations: ✓ Your workplace: ✓

DURATION: 1 DAY | PRICE: \$350.00



# Traffic Management

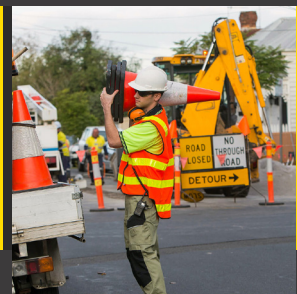
## TRAFFIC MANAGEMENT

### RIIWH5205E - CONTROL TRAFFIC WITH STOP-SLOW BAT RIIWH5302E - IMPLEMENT TRAFFIC MANAGEMENT PLANS

Our traffic management course features hands-on training to ensure traffic controllers are "Road Ready" and provides multiple situations used to ensure an understanding of the dangers of road workers face to maximise safety at job sites. The course provides the required competency to control traffic on public roads with a stop-slow bat.

Our Locations: ✓ Your workplace: ✓

DURATION: 2 DAYS | PRICE: \$450.00





# Earthmoving

## SKID STEER

### RIIMPO318F - CONDUCT CIVIL CONSTRUCTION SKID STEER LOADER OPERATIONS

This course teaches the safe use of skid steers with practical experience in stockpiling, leveling, reinstatement, attachments and load restraint. Operators will be able to restrain equipment for transport and undertake site tasks including loading trucks, transportation of materials and reinstatement of sites.

Our Locations: ✓ Your workplace: ✓

**DURATION: 3 TO 5 DAYS | PRICE: \$999.00**



## EXCAVATOR

### RIIMPO320F - CONDUCT CIVIL CONSTRUCTION EXCAVATOR OPERATIONS

This course teaches excavator operations in the civil construction industry. Operators will gain practical experience in various trenching techniques and bulk earthworks, including pipe lifting techniques and load restraint.

Our Locations: ✓ Your workplace: ✓

**DURATION: 3 TO 5 DAYS | PRICE: \$999.00**



## BACKHOE / LOADER

### RIIMPO319E - CONDUCT BACKHOE/LOADER OPERATIONS

This course teaches backhoe/loader operations in the civil construction industry. Operators will gain practical experience planning and preparing, conducting machine pre-operational checks, operating backhoe loaders, lifting, carrying and placing materials, selecting, removing and fitting attachments, relocating the backhoe/loaders, carrying out machine operator maintenance, trenching and cleaning up.

Our Locations: ✓ Your workplace: ✓

**DURATION: 3 TO 5 DAYS | PRICE: \$999.00**



## ROLLER

### RIIMPO317F - CONDUCT ROLLER OPERATIONS

This course teaches roller operations in the civil construction industry. Operators will gain practical experience in roller operations and be taught the skills associated with the compaction of materials required to assist with building roads.

Our Locations: ✓ Your workplace: ✓

**DURATION: 3 TO 5 DAYS | PRICE: \$999.00**



## FRONT END LOADER

### RIIMPO321F - CONDUCT CIVIL CONSTRUCTION WHEELED FRONT END LOADER OPERATIONS

This course teaches front end loader operations in the civil construction industry. Operators will gain competency and confidence to bulk load and stockpile materials, level and strip sites and restrain a wheeled front end loader for transport.

Our Locations: ✓ Your workplace: ✓

**DURATION: 3 TO 5 DAYS | PRICE: \$999.00**



## DISCOUNT BUNDLES - MULTIPLE MACHINE DISCOUNTS AVAILABLE

Increase your skills with our multiple machine bundles. Mix and match and receive a bulk discount.

**ANY 2 - \$1,599.00**  
**ANY 3 - \$2,199.00**  
**ANY 4 - \$2,799.00**



Our Locations: ✓ Your workplace: ✓

**PRICE: \$ASK**

## VERIFICATION OF COMPETENCY (VOC) - EARTHMOVING

VOC is defined as “a method of documented evaluation of the skill level of a person against defined competency standards”. VOC's are available on a range of plant and equipment.



Our Locations: ✓ Your workplace: ✓

**PRICE: \$ASK**



## Other Short Courses

### WHITE CARD

#### CPCWHS1001 - PREPARE TO WORK SAFELY IN THE CONSTRUCTION INDUSTRY

Do you need to get your White Card? The Construction Induction White Card course enables participants to work safely in the construction industry.

Our Locations: ✓ Your workplace: ✓

DURATION: 1 DAY | PRICE: \$165.00



### SCAN PACK

#### TLIK2010 - USE INFOTECHNOLOGY DEVICES IN THE WORKPLACE

This course is an introduction to RF Scanning in a warehouse environment. The course offers hands-on training with RF computer based equipment and a standard hand held RF gun. You will also learn to pick, pack and scan stock from multiple locations and prepare stock for dispatch using an industry standard RF system.

Our Locations: ✓ Your workplace: ✓

DURATION: 2 DAYS | PRICE: \$400.00



## Full Qualifications

# Get Trained in Civil Construction or Logistics

Foresite Training is Australia's leading provider of qualifications in the civil construction and logistics industries. We work closely with industry to ensure our programs are relevant and effective and that they are improving the quality and safety of workers.

Enrol now and gain the skills and knowledge for a rewarding career in one of Australia's most in-demand employment sectors.

Programs on offer:

- 22648VIC – Course in Transport and Logistics Employment Pathway
- TLI31222 – Certificate III in Driving Operations
- TLI30321 – Certificate III in Supply Chain Operations
- CPC20220 – Certificate II in Construction Pathways
- RII30820 – Certificate III in Civil Construction Plant Operations

Entry requirements apply to courses. Course prices and durations are subject to change and will be confirmed prior to enrolment.

\*This training may be delivered with Victorian and Commonwealth Government funding through the Skills First Program for eligible individuals. Commencing this course may impact your future entitlement to receive government subsidised training. Individuals with disabilities and/or special needs are encouraged to apply. Fees apply.



**FORESITE**  
GROUP

**Skills. Jobs. Safe Workplaces.**  
**Call 1300 366 015**

FORESITE TRAINING PTY LTD  
RTO Code: 22227 ABN: 30 119 110 762

Version 3.6-31/08/23